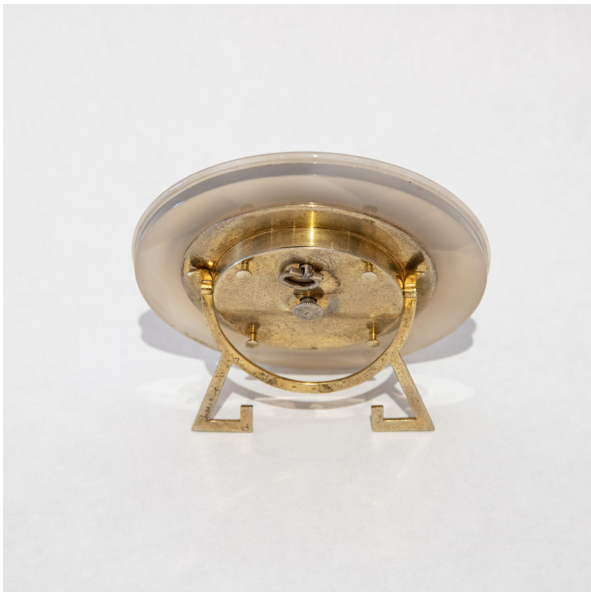

MAISON RAPIN



Boucheron

TRAVEL CLOCK, FRANCE, CIRCA 1910

Clock with the time, the date and the moon phases.
Cornaline strapping, diamants hands, platinum
face, silver elements and silver-gilt back.
Diameter: 12 cm / 4.72 inches

MAISON RAPIN
7 QUAI DE CONTI, 75006 PARIS

+33 (0)1 42 61 24 21
CONTACT@MAISON-RAPIN.COM
WWW.MAISON-RAPIN.COM

