

MAISON  
RAPIN

Jean Després  
(1889 - 1980)

*Goldsmith of Modernity*

Collection Catalogue

04/04/2024 - 27/04/2024

7 Quai de Conti 75006 Paris

[contact@maison-rapin.com](mailto:contact@maison-rapin.com)

+33 (0)1 42 61 24 21

---

# MAISON RAPIN

---



## Jean Després (1889-1980)

TUREEN, FRANCE, CIRCA 1930

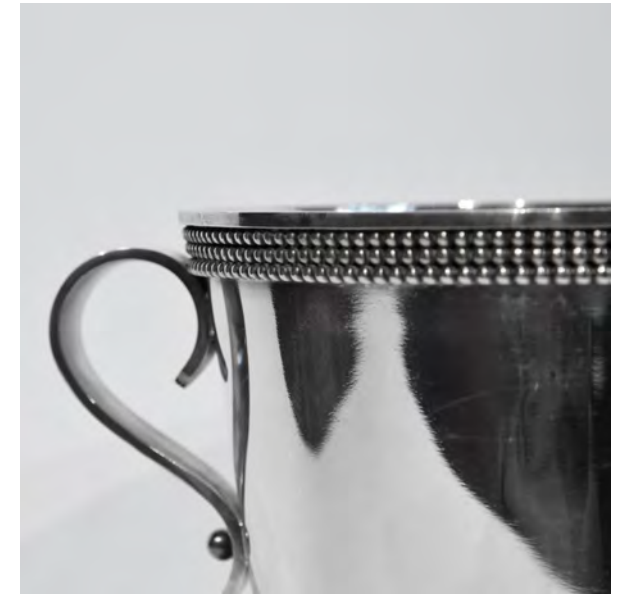
Rare silvered metal soup tureen with spheres pattern,  
walnut details and base  
Signed under the base  
H 15 x D 24 cm  
H 5.9 x D 9.45 inches

MAISON RAPIN  
7 QUAI DE CONTI, 75006 PARIS

+33 (0)1 42 61 24 21  
CONTACT@MAISON-RAPIN.COM  
WWW.MAISON-RAPIN.COM



MAISON  
RAPIN



## Jean Després (1889-1980)

CHAMPAGNE BUCKETS, FRANCE, 1962

Silvered smooth metal champagne bucket, adorned with a triple pearls frieze on the upper part, two lateral handles.

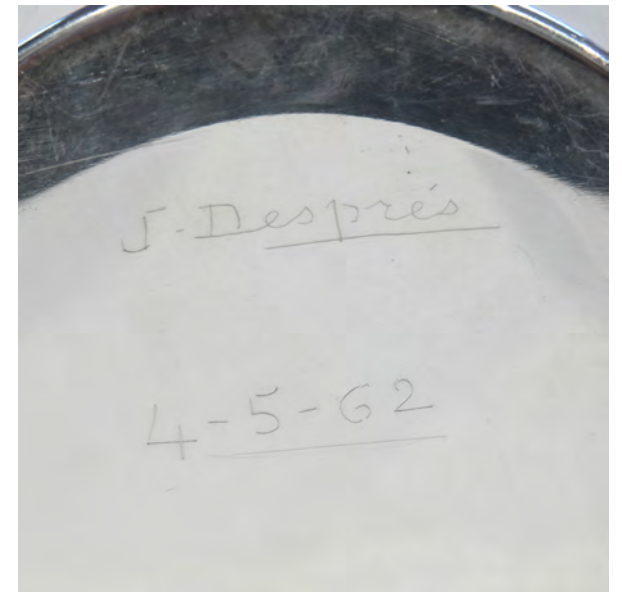
Signed and dated «J. Després 4-5-62»

H 20 x D 27 cm

H 7.87 x D 10.63 inches

MAISON RAPIN  
7 QUAI DE CONTI, 75006 PARIS

+33 (0)1 42 61 24 21  
CONTACT@MAISON-RAPIN.COM  
WWW.MAISON-RAPIN.COM



---

MAISON  
RAPIN

---



Jean Després (1889-1980)

CANDLE HOLDERS, FRANCE, CIRCA 1950/1960

Pair of silver plated candle holders, hammered bases  
and cups, cylindrical smooth structure

Master's mark.

H 21.5 x D 16 cm

H 8.47 x D 6.3 inches

MAISON RAPIN  
7 QUAI DE CONTI, 75006 PARIS

+33 (0)1 42 61 24 21  
CONTACT@MAISON-RAPIN.COM  
WWW.MAISON-RAPIN.COM

---





## Jean Després (1889-1980)

PAIR OF CANDLE HOLDERS, FRANCE, CIRCA 1950

Partly hammered silver plated metal candle holders. Chain pattern spiraling around the structure.

Master's hallmark.

H 32 x W 42 x D 42 cm

H 12.6 x W 16.54 x D 16.54 inches

Provenance : Hôtel du Morvan in Avallon



MAISON RAPIN  
7 QUAI DE CONTI, 75006 PARIS

+33 (0)1 42 61 24 21  
CONTACT@MAISON-RAPIN.COM  
WWW.MAISON-RAPIN.COM

---



## Jean Després (1889-1980)

COFFEE POT, FRANCE, CIRCA 1950

Coffee pot in solid hammered silver  
and wooden grip.  
Signed. Silver hallmark and maker's hallmark.  
H 21 cm / 8.27 in  
Diameter : 11 cm / 4.33 in

MAISON RAPIN  
7 QUAI DE CONTI, 75006 PARIS

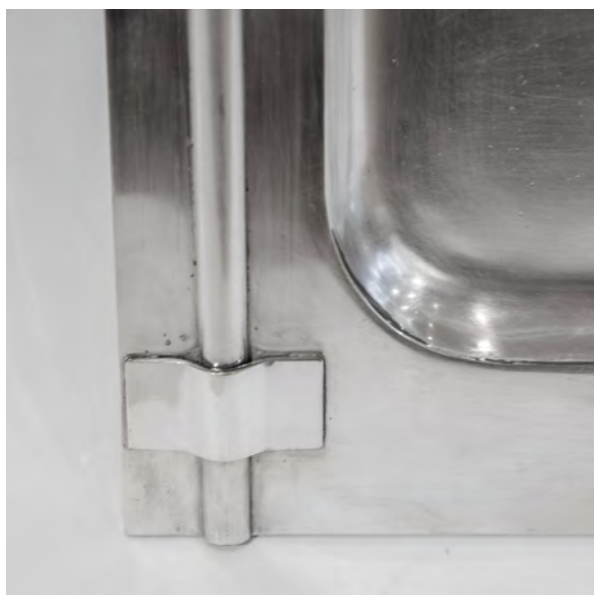
+33 (0)1 42 61 24 21  
CONTACT@MAISON-RAPIN.COM  
WWW.MAISON-RAPIN.COM



---

MAISON  
RAPIN

---



## Jean Després (1889-1980)

TRAY, FRANCE, CIRCA 1950

Silvered metal rectangular tray  
Signed. Master's mark.  
H 55 x W 46 cm  
H 21.65 x W 18.11 inches

MAISON RAPIN  
7 QUAI DE CONTI, 75006 PARIS

+33 (0)1 42 61 24 21  
CONTACT@MAISON-RAPIN.COM  
WWW.MAISON-RAPIN.COM



---

MAISON  
RAPIN

---



## Jean Després (1889-1980)

TRAY, FRANCE, CIRCA 1950

Partly hammered silvered metal tray.

Master's mark.

H 45.5 x W 55.5 cm

H 17.91 x W 21.85 inches

MAISON RAPIN  
7 QUAI DE CONTI, 75006 PARIS

+33 (0)1 42 61 24 21  
CONTACT@MAISON-RAPIN.COM  
WWW.MAISON-RAPIN.COM

---



MAISON  
RAPIN



## Jean Després (1889-1980)

PAIR OF VASES, FRANCE, CIRCA 1950

Silvered metal vases, chain pattern on the base.  
Signed under the base, master hallmark.

H 21 x D 18 cm

H 8.27 x D 7.09 inches

MAISON RAPIN  
7 QUAI DE CONTI, 75006 PARIS

+33 (0)1 42 61 24 21  
CONTACT@MAISON-RAPIN.COM  
WWW.MAISON-RAPIN.COM



MAISON  
RAPIN



## Jean Després (1889-1980)

OVAL WEDDING FAVOR, FRANCE, CIRCA 1950/1960

Oval wedding favor in silver metal

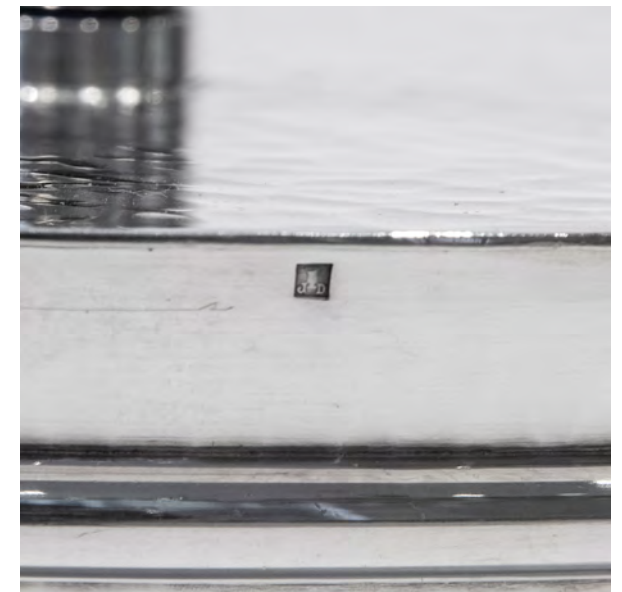
Master's mark

H 6 x W 21 x D 14,5 cm

H 2.36 x W 8.27 x D 5.71 inches

MAISON RAPIN  
7 QUAI DE CONTI, 75006 PARIS

+33 (0)1 42 61 24 21  
CONTACT@MAISON-RAPIN.COM  
WWW.MAISON-RAPIN.COM



---

MAISON  
RAPIN

---



## Jean Després (1889-1980)

LARGE SAUCEBOAT, FRANCE, CIRCA 1950

Silver-plated hammered metal sauceboat on rectangular base; rim encircled with rows of beads.

Signed underneath. Master's mark.

H 8,5 x W 23 x D 12 cm

H 3.35 x W 9.05 x D 4.72 inches

MAISON RAPIN  
7 QUAI DE CONTI, 75006 PARIS

+33 (0)1 42 61 24 21  
CONTACT@MAISON-RAPIN.COM  
WWW.MAISON-RAPIN.COM

---





## Jean Després (1889-1980)

SAUCEBOAT, FRANCE, CIRCA 1950

Sauceboat in silver-plated metal on a rectangular base; rim and handle encircled with rows of beads.

Signed underneath. Master's mark.

H 10 x W 19,5 x D 10,5 cm

H 3.94 x W 7.68 w D 7.68 inches

MAISON RAPIN  
7 QUAI DE CONTI, 75006 PARIS

+33 (0)1 42 61 24 21  
CONTACT@MAISON-RAPIN.COM  
WWW.MAISON-RAPIN.COM





## Jean Després (1889-1980)

TIMBALE, FRANCE, CIRCA 1950/1960

Silvered smooth metal timbale on a hammered  
base adorned with a sphere  
Signed underneath  
H 10 x D 6.5 cm  
H 3.94 x D 2.56 inches

MAISON RAPIN  
7 QUAI DE CONTI, 75006 PARIS

+33 (0)1 42 61 24 21  
CONTACT@MAISON-RAPIN.COM  
WWW.MAISON-RAPIN.COM



MAISON  
RAPIN



## Jean Després (1889-1980)

TIMBALE, FRANCE, CIRCA 1950/1960

Silvered metal timbale on a chain pattern base  
Signed underneath  
H 9 x D 6.8 cm  
H 3.54 x D 2.68 inches

MAISON RAPIN  
7 QUAI DE CONTI, 75006 PARIS

+33 (0)1 42 61 24 21  
CONTACT@MAISON-RAPIN.COM  
WWW.MAISON-RAPIN.COM



MAISON  
RAPIN



## Jean Després (1889-1980)

TIMBALE, FRANCE, CIRCA 1950/1960

Silvered metal timbale on a chain pattern base  
Signed underneath  
H 8.8 x D 6.5 cm  
H 3.47 x 2.56 inches

MAISON RAPIN  
7 QUAI DE CONTI, 75006 PARIS

+33 (0)1 42 61 24 21  
CONTACT@MAISON-RAPIN.COM  
WWW.MAISON-RAPIN.COM





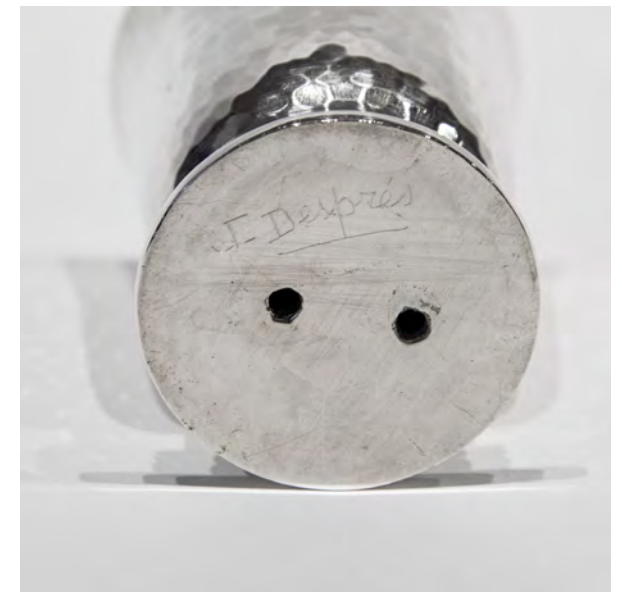
Jean Després  
(1889-1980)

TIMBALE, FRANCE, CIRCA 1950/1960

Hammered silvered metal timbale on a chain  
pattern base  
Signed underneath  
H 8 x D 6 cm  
H 3.15 x D 2.36 inches

MAISON RAPIN  
7 QUAI DE CONTI, 75006 PARIS

+33 (0)1 42 61 24 21  
CONTACT@MAISON-RAPIN.COM  
WWW.MAISON-RAPIN.COM





---

MAISON  
RAPIN

---



## Jean Després (1889-1980)

TIMBALE, FRANCE, CIRCA 1950/1960

Hammered silvered metal timbale on a chain  
pattern base  
Signed underneath  
H 9.4 x D 7 cm  
H 3.7 x D 2.76 inches

MAISON RAPIN  
7 QUAI DE CONTI, 75006 PARIS

+33 (0)1 42 61 24 21  
CONTACT@MAISON-RAPIN.COM  
WWW.MAISON-RAPIN.COM



---

MAISON  
RAPIN

---



## Jean Després (1889-1980)

ICE BUCKET, FRANCE, CIRCA 1950

Small silver plated ice bucket  
Signed  
H 12.2 x D 16 cm  
H 4.8 x D 6.3 inches

MAISON RAPIN  
7 QUAI DE CONTI, 75006 PARIS

+33 (0)1 42 61 24 21  
CONTACT@MAISON-RAPIN.COM  
WWW.MAISON-RAPIN.COM



---

MAISON  
RAPIN

---



Jean Després (1889-1980)

CUP, FRANCE, CIRCA 1950

Round silvered metal cup  
H 6.9 x D 21 cm  
H 2.72 x 8.27 inches

MAISON RAPIN  
7 QUAI DE CONTI, 75006 PARIS

+33 (0)1 42 61 24 21  
CONTACT@MAISON-RAPIN.COM  
WWW.MAISON-RAPIN.COM

---



---

MAISON  
RAPIN

---



## Jean Després (1889-1980)

CUP, FRANCE, CIRCA 1960

Silver plated metal small cup  
Signed. Marker's hallmark  
H 7 x D 11 cm / H 2.76 x D 4.33 inches

MAISON RAPIN  
7 QUAI DE CONTI, 75006 PARIS

+33 (0)1 42 61 24 21  
CONTACT@MAISON-RAPIN.COM  
WWW.MAISON-RAPIN.COM

---



## Jean Després (1889-1980)

SMALL BOX, FRANCE, CIRCA 1940/1950

Small hammered silvered metal circular box with  
cover and rectangular handle.

Signed. Master's hallmark.

H 6 cm / 2.36 in

Diameter: 16 cm / 6.30 in

MAISON RAPIN  
7 QUAI DE CONTI, 75006 PARIS

+33 (0)1 42 61 24 21  
CONTACT@MAISON-RAPIN.COM  
WWW.MAISON-RAPIN.COM





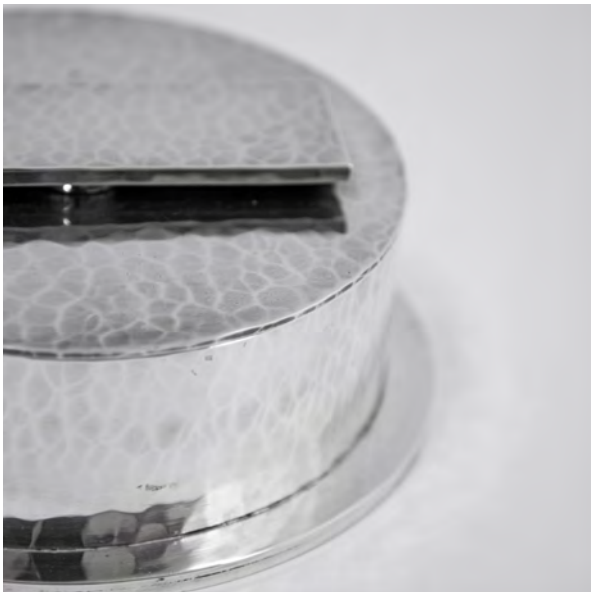
## Jean Després (1889-1980)

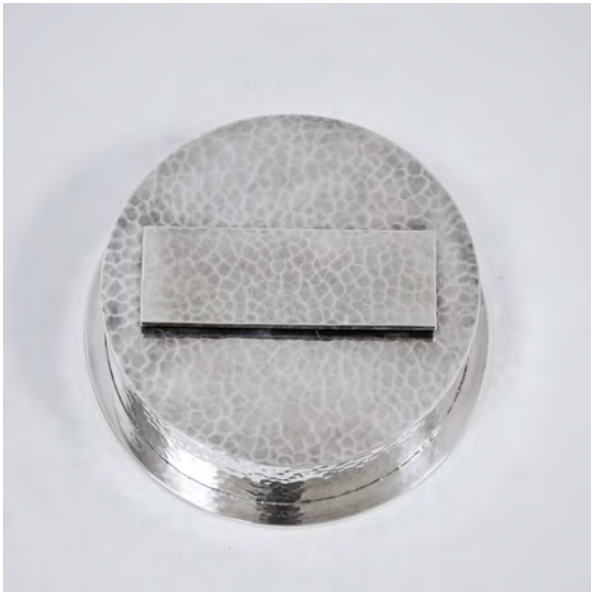
BOX, FRANCE, CIRCA 1940/1950

Hammered silvered metal circular box with cover  
and rectangular handle.  
Signed. Master's hallmark.  
H 7 cm / 2.76 in  
Diameter: 18 cm / 7.09 in

MAISON RAPIN  
7 QUAI DE CONTI, 75006 PARIS

+33 (0)1 42 61 24 21  
CONTACT@MAISON-RAPIN.COM  
WWW.MAISON-RAPIN.COM





## Jean Després (1889-1980)

LARGE BOX, FRANCE, CIRCA 1940/1950

Large hammered silvered metal circular box with cover and rectangular handle.

Signed. Master's hallmark.

H 8 cm / 3.15 in

Diameter: 20,5 cm / 8.07 in

MAISON RAPIN  
7 QUAI DE CONTI, 75006 PARIS

+33 (0)1 42 61 24 21  
CONTACT@MAISON-RAPIN.COM  
WWW.MAISON-RAPIN.COM



---

# MAISON RAPIN

---



## Jean Després (1889-1980)

FLATWARE SERVICE, FRANCE, CIRCA 1950

Set of 24 pieces in solid hammered silver:  
12 forks  
12 spoons  
Master's mark. Silver hallmark.

MAISON RAPIN  
7 QUAI DE CONTI, 75006 PARIS

+33 (0)1 42 61 24 21  
CONTACT@MAISON-RAPIN.COM  
WWW.MAISON-RAPIN.COM





---

# MAISON RAPIN

---



## Jean Després (1889-1980)

FLATWARE SERVICE, FRANCE, CIRCA 1950

Flatware service in solid silver composed of 84 pieces: 12 forks, 12 spoons, 12 fish knives, 12 dessert forks, 12 dessert spoons, 12 oyster forks, 12 coffee spoons.

12 silver fish forks and 12 silver knives are added to the service, for a total of 108 pieces.

Silver hallmark and Master hallmark.

MAISON RAPIN  
7 QUAI DE CONTI, 75006 PARIS

+33 (0)1 42 61 24 21  
CONTACT@MAISON-RAPIN.COM  
WWW.MAISON-RAPIN.COM



---

# MAISON RAPIN

---



## Jean Després (1889-1980)

FLATWARE SERVICE, FRANCE, CIRCA 1940

Silver metal cutlery composed of:

8 big spoons

9 knives

15 forks

8 tea spoons

8 tiny forks

7 tiny knives

Master's mark.

MAISON RAPIN  
7 QUAI DE CONTI, 75006 PARIS

+33 (0)1 42 61 24 21  
CONTACT@MAISON-RAPIN.COM  
WWW.MAISON-RAPIN.COM

---



---

MAISON  
RAPIN

---



## Jean Després (1889-1980)

LETTER OPENER, FRANCE, CIRCA 1930

Silvered metal letter opener, cylindrical handle

Master's hallmark.

L 30 x W 3 cm

L 11.81 x W 1.18 inches



MAISON RAPIN  
7 QUAI DE CONTI, 75006 PARIS

+33 (0)1 42 61 24 21  
CONTACT@MAISON-RAPIN.COM  
WWW.MAISON-RAPIN.COM

---



## Jean Després (1889-1980)

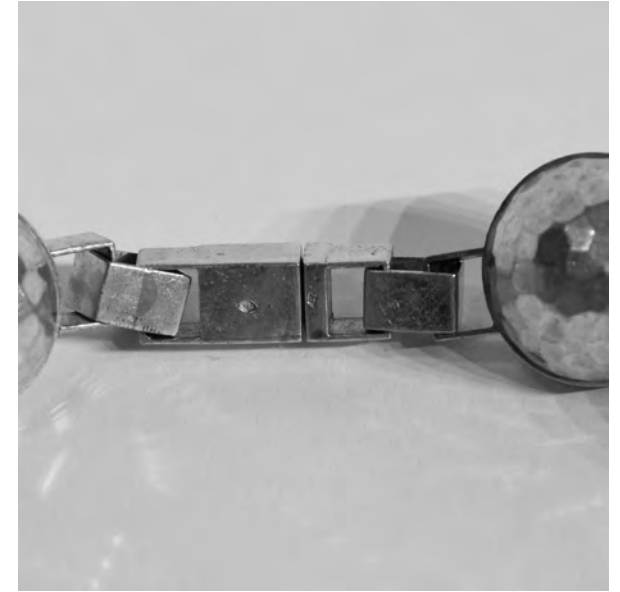
JEWELRY SET, FRANCE, CIRCA 1960

Silver jewelry set consisting of an abstract pattern necklace with a chain length of 25 cm (9.84 inches) and a rectangular pendant measuring 6 cm in length and 3 cm in width (2.36 x 1.18 inches); an abstract pattern ring with a diameter of 1.8 cm (0.71 inch), FR size 57 or US size 8; an abstract pattern bracelet measuring 17 cm in length and 3.5 cm in width (6.69 x 1.38 inches). Master hallmark. Silver hallmark.

MAISON RAPIN  
7 QUAI DE CONTI, 75006 PARIS

+33 (0)1 42 61 24 21  
CONTACT@MAISON-RAPIN.COM  
WWW.MAISON-RAPIN.COM





## Jean Després (1889-1980)

NECKLACE, FRANCE, CIRCA 1930

Silver Necklace with hammered silver geometrical patterns.

Silver hallmark and maker's mark.

Length : 55 cm / 21.64 inches

Spheres diameter : 3 cm / 1.18 inches

MAISON RAPIN  
7 QUAI DE CONTI, 75006 PARIS

+33 (0)1 42 61 24 21  
CONTACT@MAISON-RAPIN.COM  
WWW.MAISON-RAPIN.COM

---



## Jean Després (1889-1980)

NECKLACE, FRANCE, CIRCA 1940

Silver chain, square jade pendant in a silver frame  
Signed and hallmarked  
Chain : 57 cm / 22.44 inches long  
Pendant : L 4.5 x W 4.5 cm / L 1.77 x W 1.77 inches

MAISON RAPIN  
7 QUAI DE CONTI, 75006 PARIS

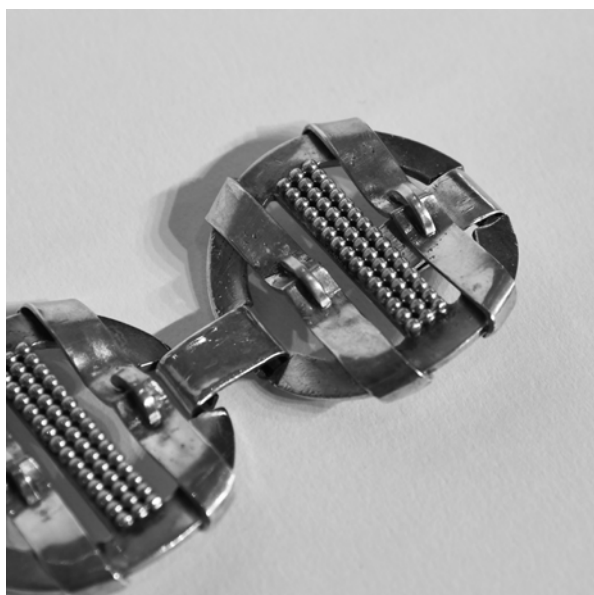
+33 (0)1 42 61 24 21  
CONTACT@MAISON-RAPIN.COM  
WWW.MAISON-RAPIN.COM

---

---

MAISON  
RAPIN

---



Jean Després (1889-1980)

BRACELET, FRANCE, CIRCA 1930/1940

Geometric patterns silver bracelet  
Signature. Maker's mark. Silver hallmark.  
18 cm long / 4 cm large  
7.09 inches long / 1.58 inches large

MAISON RAPIN  
7 QUAI DE CONTI, 75006 PARIS

+33 (0)1 42 61 24 21  
CONTACT@MAISON-RAPIN.COM  
WWW.MAISON-RAPIN.COM

---



MAISON  
RAPIN



## Jean Després (1889-1980)

BRACELET, FRANCE, CIRCA 1940

Geometric silver bracelet  
Silver hallmark  
20 cm long / 2.2 cm large  
7.87 inches long / 0.87 inch large

MAISON RAPIN  
7 QUAI DE CONTI, 75006 PARIS

+33 (0)1 42 61 24 21  
CONTACT@MAISON-RAPIN.COM  
WWW.MAISON-RAPIN.COM





## Jean Després (1889-1980)

BRACELET, FRANCE, CIRCA 1960

Silver bracelet  
Signed. Marker's mark. Silver hallmark.  
18.3 cm long / 2.9 cm large  
7.21 inches long / 1.14 inches large

MAISON RAPIN  
7 QUAI DE CONTI, 75006 PARIS

+33 (0)1 42 61 24 21  
CONTACT@MAISON-RAPIN.COM  
WWW.MAISON-RAPIN.COM

---

---

MAISON  
RAPIN

---



## Jean Després (1889-1980)

BRACELET, FRANCE, CIRCA 1950

Solid silver bracelet with geometrical patterns  
Signature. Maker's hallmark. Silver hallmark. 17.5  
cm long / 2.3 cm large  
6.8 inches long / 0.91 inch large

MAISON RAPIN  
7 QUAI DE CONTI, 75006 PARIS

+33 (0)1 42 61 24 21  
CONTACT@MAISON-RAPIN.COM  
WWW.MAISON-RAPIN.COM

---



MAISON  
RAPIN



## Jean Després (1889-1980)

BRACELET, FRANCE, CIRCA 1930

Silver bracelet made with apertured rectangles  
Maker's hallmark. Silver hallmark.  
18.9 cm long / 4 cm large  
7.44 inches long / 1.58 inch large



MAISON RAPIN  
7 QUAI DE CONTI, 75006 PARIS

+33 (0)1 42 61 24 21  
CONTACT@MAISON-RAPIN.COM  
WWW.MAISON-RAPIN.COM



## Jean Després (1889-1980)

BRACELET, FRANCE, CIRCA 1940/1950

Silver bracelet  
Maker's mark. Silver hallmark.  
L 20 x W 4 cm  
L 7.87 x W 1.58 inches

MAISON RAPIN  
7 QUAI DE CONTI, 75006 PARIS

+33 (0)1 42 61 24 21  
CONTACT@MAISON-RAPIN.COM  
WWW.MAISON-RAPIN.COM





## Jean Després (1889-1980)

BRACELET, FRANCE, CIRCA 1950

Modernist silver bracelet  
Signed. Maker's mark. Silver hallmark.  
L 18.5 x W 1.9 cm  
L 7.28 x W 0.75 inches

MAISON RAPIN  
7 QUAI DE CONTI, 75006 PARIS

+33 (0)1 42 61 24 21  
CONTACT@MAISON-RAPIN.COM  
WWW.MAISON-RAPIN.COM

---



## Jean Després (1889-1980)

RING, FRANCE, CIRCA 1950

Spherical Patterned Silver Ring  
Maker's hallmark. Silver hallmark.  
Diameter 1.8 cm / 0.71 inch  
Size US 8 : Size FR 57

MAISON RAPIN  
7 QUAI DE CONTI, 75006 PARIS

+33 (0)1 42 61 24 21  
CONTACT@MAISON-RAPIN.COM  
WWW.MAISON-RAPIN.COM





Jean Després (1889-1980)

RING, FRANCE, CIRCA 1950

Silver ring with spheres  
Maker's hallmark. Silver hallmark.  
Diameter 1.8 cm / 0.71 inch  
Size US 8 / Size FR 57

MAISON RAPIN  
7 QUAI DE CONTI, 75006 PARIS

+33 (0)1 42 61 24 21  
CONTACT@MAISON-RAPIN.COM  
WWW.MAISON-RAPIN.COM



MAISON  
RAPIN



## Jean Després (1889-1980)

RING, FRANCE, CIRCA 1940

Silver ring with gold detail,  
Maker's hallmark. Silver hallmark.  
Diameter : 1.7 cm / 0.67 inch  
Size US 7 / Size FR 54  
H 2 x W 2 x D 3 cm  
H 0.79 x W 0.79 x D 1.18 inches

MAISON RAPIN  
7 QUAI DE CONTI, 75006 PARIS

+33 (0)1 42 61 24 21  
CONTACT@MAISON-RAPIN.COM  
WWW.MAISON-RAPIN.COM





MAISON  
RAPIN



## Jean Després (1889-1980)

RING, FRANCE, CIRCA 1950

Silver ring and head ring with rectangular gold details

Maker's mark. Silver hallmark.

Diameter : 1.8 cm / 0.71 inch

Size US 8 / Size FR 57

MAISON RAPIN  
7 QUAI DE CONTI, 75006 PARIS

+33 (0)1 42 61 24 21  
CONTACT@MAISON-RAPIN.COM  
WWW.MAISON-RAPIN.COM





## Jean Després (1889-1980)

RING, FRANCE, CIRCA 1950

Geometrical silver and silver-gilt ring  
Maker's mark. Silver and silver-gilt hallmarks  
Diameter : 1.7 cm / 0.67 inch  
Size US 7 / Size FR 54  
Ring head : H 2.5 x L 1 cm / H 0.98 x L 0.39 inch

MAISON RAPIN  
7 QUAI DE CONTI, 75006 PARIS

+33 (0)1 42 61 24 21  
CONTACT@MAISON-RAPIN.COM  
WWW.MAISON-RAPIN.COM



## Jean Després (1889-1980)

RING, FRANCE, CIRCA 1940

Silver ring, silver ring head with a rectangular  
central shagreen inclusion  
Maker's hallmark. Silver hallmark.  
Diameter : 1.9 cm / 0.75 inch  
Size US 9.5 / Size FR 60  
Ring head : H 2.6 x W 3 cm / H 1.02 x W 1.18 inches

MAISON RAPIN  
7 QUAI DE CONTI, 75006 PARIS

+33 (0)1 42 61 24 21  
CONTACT@MAISON-RAPIN.COM  
WWW.MAISON-RAPIN.COM





## Jean Després (1889-1980)

RING, FRANCE, 1950-1960

Gold ring adorned with a burnt topaz.  
Master's mark. Gold hallmark.  
Diameter : 1.7 cm / 0.67 inch  
Size US 7 / Size FR 54

MAISON RAPIN  
7 QUAI DE CONTI, 75006 PARIS

+33 (0)1 42 61 24 21  
CONTACT@MAISON-RAPIN.COM  
WWW.MAISON-RAPIN.COM



## Jean Després (1889-1980)

RING, FRANCE, CIRCA 1940

Silver ring and cylindrical turquoise ring head  
Maker's hallmark. Silver hallmark.  
Diameter 1.8 cm / 0.71 inch  
Size US 8 : Size FR 57  
Ring head : W 2.5 x D 1.3 cm / W 0.98 x D 0.51 inch



MAISON RAPIN  
7 QUAI DE CONTI, 75006 PARIS

+33 (0)1 42 61 24 21  
CONTACT@MAISON-RAPIN.COM  
WWW.MAISON-RAPIN.COM

MAISON  
RAPIN



## Jean Després (1889-1980)

RING, FRANCE, CIRCA 1940/1950

Ring with geometric patterns in gold, silver and onyx.

Master's mark. Silver hallmark.

Diameter : 1.8 cm / 0.71 inch

Size US 8 / Size FR 57

MAISON RAPIN  
7 QUAI DE CONTI, 75006 PARIS

+33 (0)1 42 61 24 21  
CONTACT@MAISON-RAPIN.COM  
WWW.MAISON-RAPIN.COM





## Jean Després (1889-1980)

BROOCH, FRANCE, CIRCA 1940/1950

Brooch with geometric patterns in gold, silver and onyx.

Master's mark. Silver hallmark.

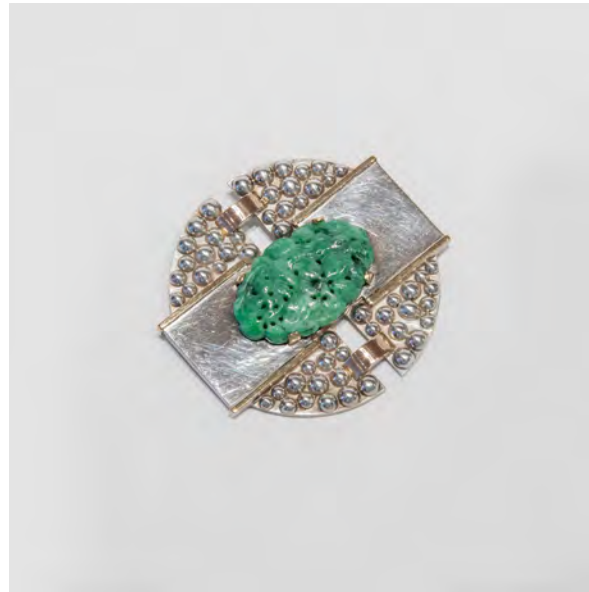
H 2 x W 5 cm

H 0.79 x W 1.97 inches

MAISON RAPIN  
7 QUAI DE CONTI, 75006 PARIS

+33 (0)1 42 61 24 21  
CONTACT@MAISON-RAPIN.COM  
WWW.MAISON-RAPIN.COM





## Jean Després (1889-1980)

BROOCH, FRANCE, CIRCA 1930

Brooch in silver and yellow gold with geometric decoration, set with a carved jade motif.  
Signed. Master's mark. Silver hallmark.

H 6 x L 6.5 cm

H 2.56 x W 2.36 inches

MAISON RAPIN  
7 QUAI DE CONTI, 75006 PARIS

+33 (0)1 42 61 24 21  
CONTACT@MAISON-RAPIN.COM  
WWW.MAISON-RAPIN.COM





MAISON  
RAPIN



## Jean Després (1889-1980)

BROOCH, FRANCE, CIRCA 1930/1940

Round brooch with ribbon and pearl motifs.  
Signed. Maker's mark. Silver hallmark.  
Diameter 4 cm / 1.58 inches



MAISON RAPIN  
7 QUAI DE CONTI, 75006 PARIS

+33 (0)1 42 61 24 21  
CONTACT@MAISON-RAPIN.COM  
WWW.MAISON-RAPIN.COM



## Jean Després (1889-1980)

CLIP EARRINGS, FRANCE, CIRCA 1950

Pair of silver round clip earrings  
Signed «J. Després». Silver hallmark.  
Diameter : 1.9 cm / 0.75 inch

MAISON RAPIN  
7 QUAI DE CONTI, 75006 PARIS

+33 (0)1 42 61 24 21  
CONTACT@MAISON-RAPIN.COM  
WWW.MAISON-RAPIN.COM

MAISON  
RAPIN



## Jean Després (1889-1980)

PAIR OF CUFFLINKS, FRANCE, CIRCA 1950

Pair of silver cufflinks  
Maker's hallmark. Silver hallmark  
Signed  
H 2.5 x W 1.5 cm  
H 0.98 x W 0.59 inches

MAISON RAPIN  
7 QUAI DE CONTI, 75006 PARIS

+33 (0)1 42 61 24 21  
CONTACT@MAISON-RAPIN.COM  
WWW.MAISON-RAPIN.COM





## Jean Després (1889-1980)

PAIR OF CUFFLINKS, FRANCE, CIRCA 1950

Pair of cufflinks in silver and gold.  
Maker's hallmark. Silver hallmark. Signed on the  
back.

H 2.5 x W 1.5 cm

H 0.98 x W 0.59 inches

MAISON RAPIN  
7 QUAI DE CONTI, 75006 PARIS

+33 (0)1 42 61 24 21  
CONTACT@MAISON-RAPIN.COM  
WWW.MAISON-RAPIN.COM

---

## Biography

Born in 1889 in Souvigny into a family of artisans who moved to Avallon the following year, Jean Després grew up near the parental store of art objects and jewelry located at 27 rue de Paris, then Place Vauban.

Upon obtaining his primary teaching certificate in 1903, Jean Després began his apprenticeship with a Parisian goldsmith located in the Marais. He then attended drawing classes in the city of Paris and became involved in the artistic milieu of the Bateau-Lavoir.

The war broke out in 1914, and Després was mobilized into the infantry, then into the Automobile Services, until 1917 when he joined the aviation group as a mechanical parts draftsman.

At the end of the war, he returned to Avallon, where he set up his workshop in the back of his parents' shop. There, he designed and executed jewelry and silverware pieces, eventually taking over the family business.

The year 1925 marked the artist's first participations in Salons and exhibitions, as well as his meeting with Etienne Cournault, an engraver and glass painter with whom he would develop a friendship and produce pieces combining silver and glass, known as "glass jewelry." It was in 1928 that Després registered his hallmark and began exhibiting under his own name. He presented his works at the Salon d'Automne, which rejected them as too modern! From 1930 onwards, he began creating "engine jewelry," inspired by his experience as a draftsman during the war, and gradually established his reputation. Named a member of the jury of the Société des Artistes Décorateurs, he received numerous awards for his creations: the bronze medal of the Salon D'Automne, the gold medal at the International Exhibition of Airmail... He joined the Société des Artistes Indépendants, the Société Nationale des Beaux-Arts, the Salon des Artistes Indépendants, and the Salon de l'Union des Artistes Modernes.

He married Simone Delattre in 1937, a period during which he formed many artistic friendships, including with the animal sculptor-painter Paul Jouve (1878-1973) and the ceramist Jean Mayodon (1893-1967), with whom he collaborated to create "ceramic jewelry." Després continued to exhibit and win awards, becoming a key figure in the French artistic landscape, and received the Legion of Honor in 1939. He then opened his exhibition gallery in the 8th arrondissement, where he displayed his works as well as those of other artists, and began international exhibitions such as those in New York and Amsterdam in 1949.

The late 1950s marked a significant evolution in the master goldsmith's production: shaped pieces (candlesticks, soup tureens, flatware...) made mainly to order became more prominent than jewelry. Després' creations were acclaimed worldwide and exhibited in major institutions, such as the Victoria & Albert Museum in London. In 1975, a retrospective presented in his Parisian gallery traced half a century of creation. Attached to his childhood city where he continued to work until his death in 1980, the artist made two donations to the Avallon Museum, which dedicated part of its exhibition spaces to him. In 2017, in recognition of his work and support to the museum, the city appended the artist's name to that of the museum, which then became the "Musée Avallonnais Jean Després."

Today, he is among the greatest goldsmiths of the 20th century, with his shaped pieces and jewelry collected worldwide and showcased in the most important institutions, such as the exhibition dedicated to him in 2009 at the Musée des Arts Décoratifs in Paris.





