

MAISON  
RAPIN

Salon ART +  
DESIGN

November 7–11  
Park Avenue Armory

CATALOGUE



[contact@maison-rapin.com](mailto:contact@maison-rapin.com)

7 Quai de Conti 75006 Paris

+33 (0)1 42 61 24 21



Robert Goossens (1927-2016)

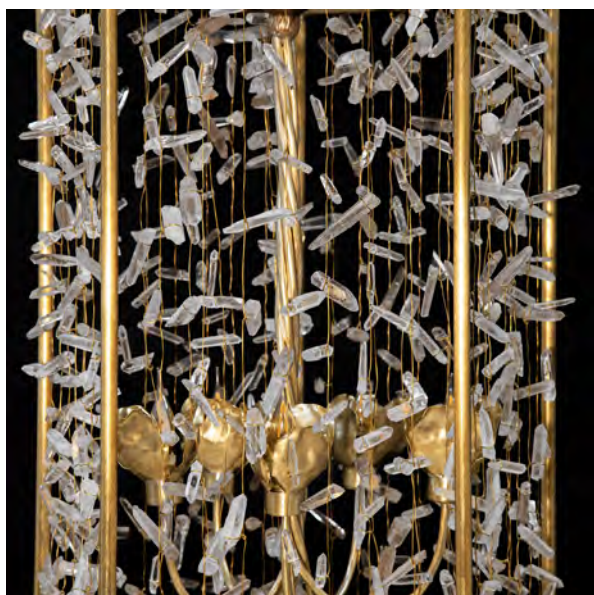
WATERLILY CHANDELIER, FRANCE, 1973

Gilt-brass and bronze structure adorned with  
rock crystals  
Signed and dated «Robert Goossens 1973»  
H 130 x D 120 cm  
H 51.18 x D 47.24 inches

MAISON RAPIN  
7 QUAI DE CONTI, 75006 PARIS

+33 (0)1 42 61 24 21  
CONTACT@MAISON-RAPIN.COM  
WWW.MAISON-RAPIN.COM





## Robert Goossens (1927-2016)

LANTERN, FRANCE, 1991

Lantern in gilt-brass and rock crystals  
Signed "Robert Goossens" and dated 1991  
H 80 X W 47 x D 47 cm  
H 31.50 x W 18.50 x D 18.50 inches

MAISON RAPIN  
7 QUAI DE CONTI, 75006 PARIS

+33 (0)1 42 61 24 21  
CONTACT@MAISON-RAPIN.COM  
WWW.MAISON-RAPIN.COM



## Robert Goossens (1927-2016)

LARGE CORAL HEART MIRROR, FRANCE, CIRCA 1980

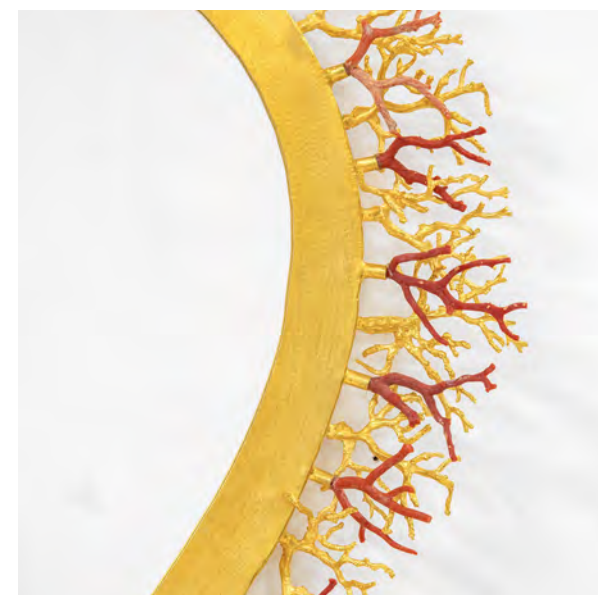
Heart-shaped frame in gilt-brass, gilt-bronze coral elements  
and natural Mediterranean corals, mirrored glass

H 80 x W 74 cm

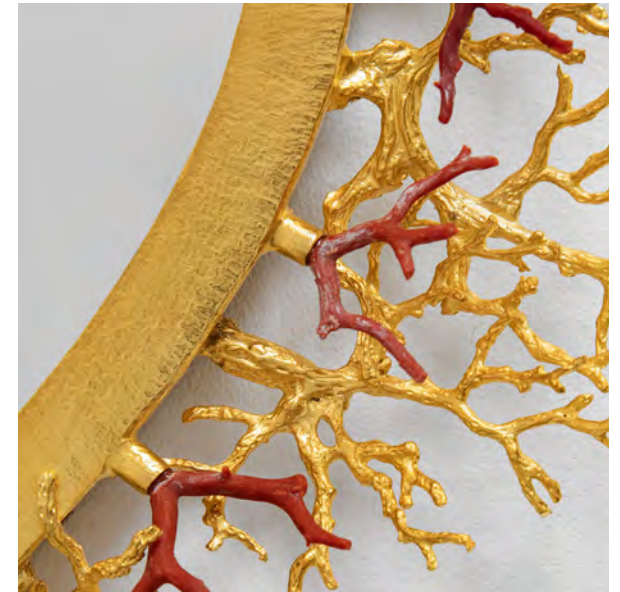
H 31.50 x W 29.13 inches

MAISON RAPIN  
7 QUAI DE CONTI, 75006 PARIS

+33 (0)1 42 61 24 21  
CONTACT@MAISON-RAPIN.COM  
WWW.MAISON-RAPIN.COM



MAISON  
RAPIN



## Robert Goossens (1927-2016)

CORAL HEART MIRROR, FRANCE, CIRCA 1980

Heart-shaped frame in gilt-brass, gilt-bronze coral elements  
and natural Mediterranean corals, mirrored glass

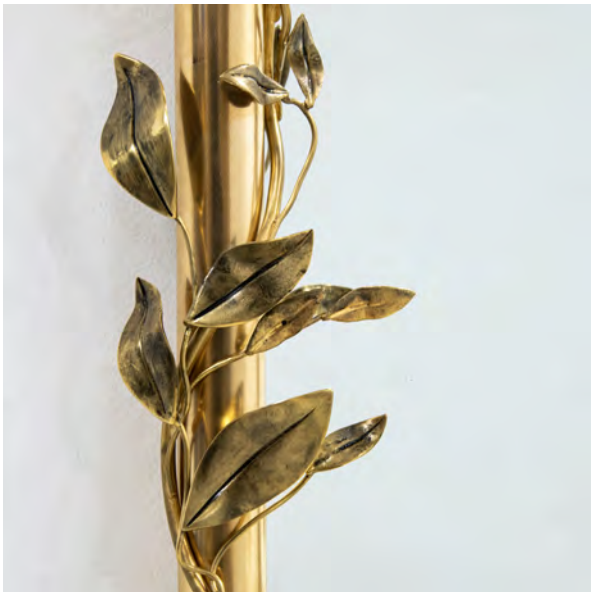
H 38 x W 38 cm

H 14.96 x W 14.96 inches

MAISON RAPIN  
7 QUAI DE CONTI, 75006 PARIS

+33 (0)1 42 61 24 21  
CONTACT@MAISON-RAPIN.COM  
WWW.MAISON-RAPIN.COM





## Robert Goossens (1927-2016)

FOLIAGE MIRROR, FRANCE, CIRCA 1980

Gilt-bronze frame imitating foliage, mirrored glass  
Signed «Robert Goossens»  
H 50 x W 40 cm  
H 19.69 x W 15.75 inches

MAISON RAPIN  
7 QUAI DE CONTI, 75006 PARIS

+33 (0)1 42 61 24 21  
CONTACT@MAISON-RAPIN.COM  
WWW.MAISON-RAPIN.COM





Robert Goossens (1927-2016)

PAIR OF ANDIRONS, FRANCE, CIRCA 1970

Pair of andiron ornaments made with patinated  
brass and gilt-bronze, natural rock crystals

Signed

H 55 x W 24 x D 15 cm

H 21.65 x W 9.45 x D 5.91 inches

MAISON RAPIN  
7 QUAI DE CONTI, 75006 PARIS

+33 (0)1 42 61 24 21  
CONTACT@MAISON-RAPIN.COM  
WWW.MAISON-RAPIN.COM





Robert Goossens (1927-2016)

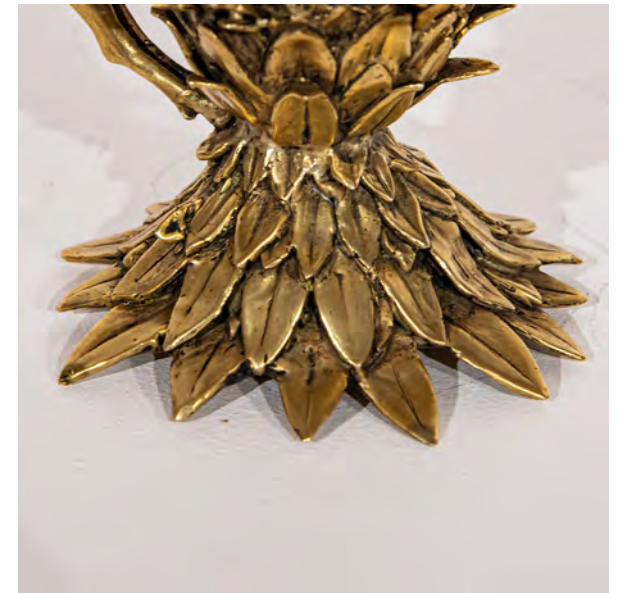
SEASHELL LAMP, FRANCE, CIRCA 1975

Rock crystal lamp  
with gilt-bronze ornaments  
H 90 x D 40 cm / H 35.43 x D 15.75 inches  
Lamp: H 72 x D 18 cm / H 28.35 x D 7.09 inches  
Lampshade: H 28 x D 40 cm /  
H 11.02 x D 15.75 inches

MAISON RAPIN  
7 QUAI DE CONTI, 75006 PARIS

+33 (0)1 42 61 24 21  
CONTACT@MAISON-RAPIN.COM  
WWW.MAISON-RAPIN.COM





Robert Goossens (1927-2016)

PAIR OF CANDLESTICKS, FRANCE, CIRCA 1970

Gilt and sculpted bronze structure, silver ring  
Signed under the base

H 28 x W 13 x D 9 cm

H 11.02 x W 5.12 x D 3.54 inches

MAISON RAPIN  
7 QUAI DE CONTI, 75006 PARIS

+33 (0)1 42 61 24 21  
CONTACT@MAISON-RAPIN.COM  
WWW.MAISON-RAPIN.COM

---

# MAISON RAPIN

---



## Robert Goossens (1927-2016)

HAND MIRROR, FRANCE, CIRCA 1970

Gilt-bronze adorned with glass cabochons  
handle, round mirror frame adorned with  
cultured pearls  
Signed "Paris, Robert du Marais"  
H 17 x D 7 cm  
H 6.69 x D 2.76 inches

MAISON RAPIN  
7 QUAI DE CONTI, 75006 PARIS

+33 (0)1 42 61 24 21  
CONTACT@MAISON-RAPIN.COM  
WWW.MAISON-RAPIN.COM



MAISON  
RAPIN



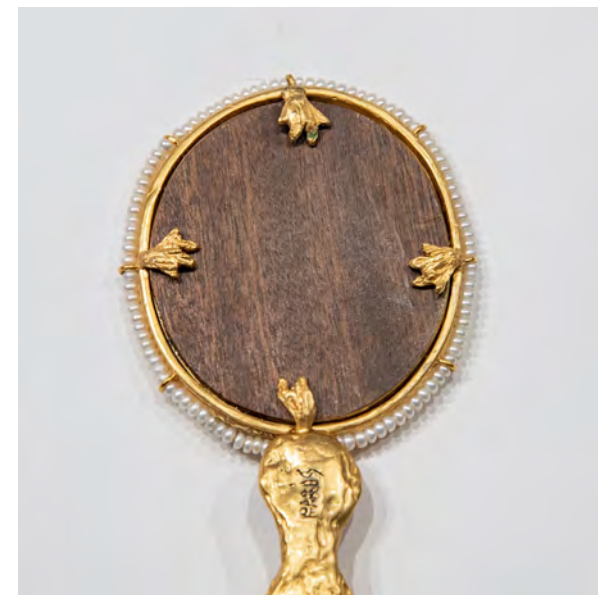
Robert Goossens (1927-2016)

HAND MIRROR, FRANCE, CIRCA 1970

Gilt-bronze adorned with glass cabochons handle,  
round mirror frame adorned with cultured pearls  
Signed at the back «Paris, Robert du Marais»  
H 17 x W 7.5 cm  
H 6.69 x W 2.95 inches

MAISON RAPIN  
7 QUAI DE CONTI, 75006 PARIS

+33 (0)1 42 61 24 21  
CONTACT@MAISON-RAPIN.COM  
WWW.MAISON-RAPIN.COM





Robert Goossens (1927-2016)

HAND MIRROR, FRANCE, CIRCA 1970

Gilt-bronze adorned with glass cabochons handle,  
round mirror frame adorned with cultured pearls  
Signed at the back «Paris, Robert du Marais»  
H 17 x W 7.5 cm  
H 6.69 x W 2.95 inches

MAISON RAPIN  
7 QUAI DE CONTI, 75006 PARIS

+33 (0)1 42 61 24 21  
CONTACT@MAISON-RAPIN.COM  
WWW.MAISON-RAPIN.COM

---

MAISON  
RAPIN

---



## KAM TIN

AMBER CABINET, FRANCE, 2012

Wooden structure covered with amber  
cabochons, polished brass and bronze

Unique piece

H 112.5 x W 97 x D 30.5 cm

H 44.29 x W 38.19 x D 12.01 inches

MAISON RAPIN  
7 QUAI DE CONTI, 75006 PARIS

+33 (0)1 42 61 24 21  
CONTACT@MAISON-RAPIN.COM  
WWW.MAISON-RAPIN.COM

---



---

# MAISON RAPIN

---



## KAMTIN

CORNALINE COFFEE TABLE, FRANCE, 2020

Cornaline marquetry top on patinated brass leg

H 49 x W 112 x D 90 cm

H 19.29 x W 44.09 x D 35.43 inches

MAISON RAPIN  
7 QUAI DE CONTI, 75006 PARIS

+33 (0)1 42 61 24 21  
CONTACT@MAISON-RAPIN.COM  
WWW.MAISON-RAPIN.COM



---

MAISON  
RAPIN

---



## KAM TIN

SIDE TABLE, FRANCE, 2023

Side table made of Siena Marble  
Limited edition for Maison Rapin  
H 45.5 x W 39.5 x D 39.5 cm  
H 17.91 x W 15.55 x D 15.55 inches

MAISON RAPIN  
7 QUAI DE CONTI, 75006 PARIS

+33 (0)1 42 61 24 21  
CONTACT@MAISON-RAPIN.COM  
WWW.MAISON-RAPIN.COM

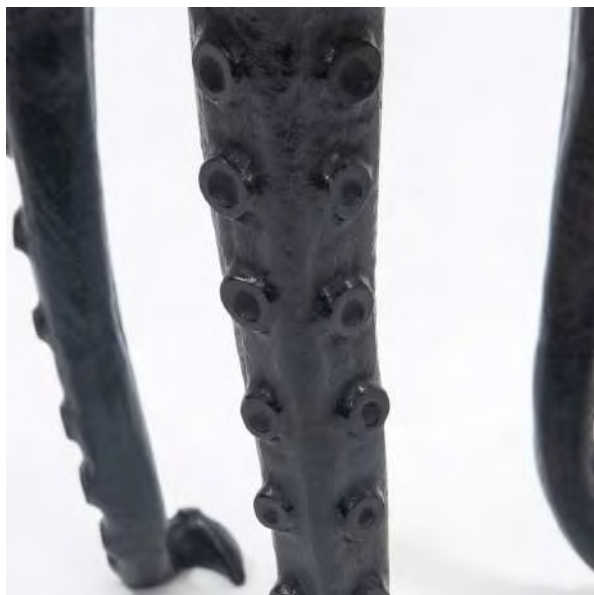
---



---

MAISON  
RAPIN

---



## KAMTIN

OCTOPUS STOOL, FRANCE, 2020

Patinated bronze legs, seating area covered with Teddy  
velvet mohair from Pierre Frey

Limited edition of 50

Signed and numbered

H 56 x D 39 cm

H 22.05 x D 15.35 inches

MAISON RAPIN  
7 QUAI DE CONTI, 75006 PARIS

+33 (0)1 42 61 24 21  
CONTACT@MAISON-RAPIN.COM  
WWW.MAISON-RAPIN.COM

---





---

# MAISON RAPIN

---



## Foddis & Baisi

VESUVIO CABINET, ITALY, 2023

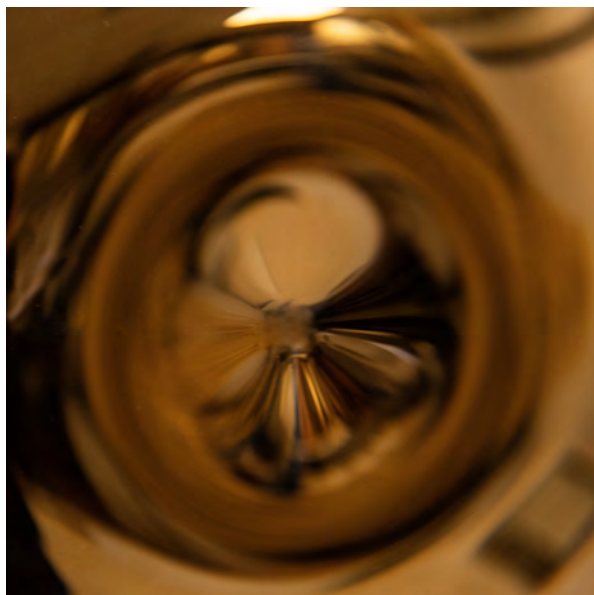
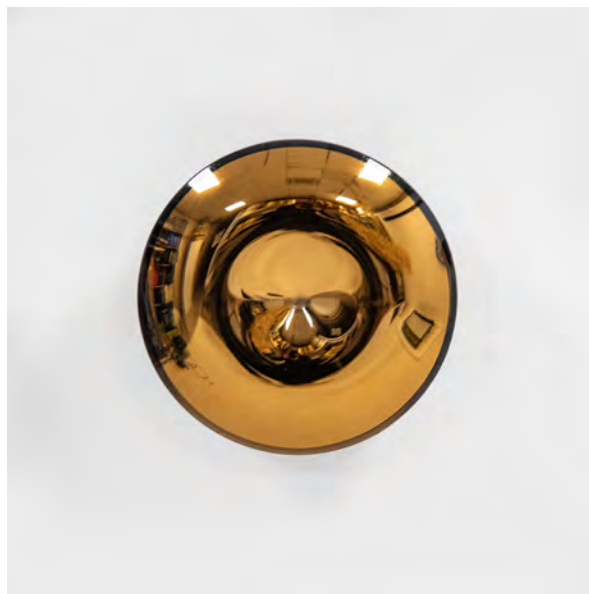
Textured and sculpted ambr glass  
Polished brass structure and interior  
Exclusive unique piece for Maison Rapin  
H 170 x W 90 x D 40 cm  
H 66.93 x W 35.43 x D 15.75 inches

MAISON RAPIN  
7 QUAI DE CONTI, 75006 PARIS

+33 (0)1 42 61 24 21  
CONTACT@MAISON-RAPIN.COM  
WWW.MAISON-RAPIN.COM



MAISON  
RAPIN



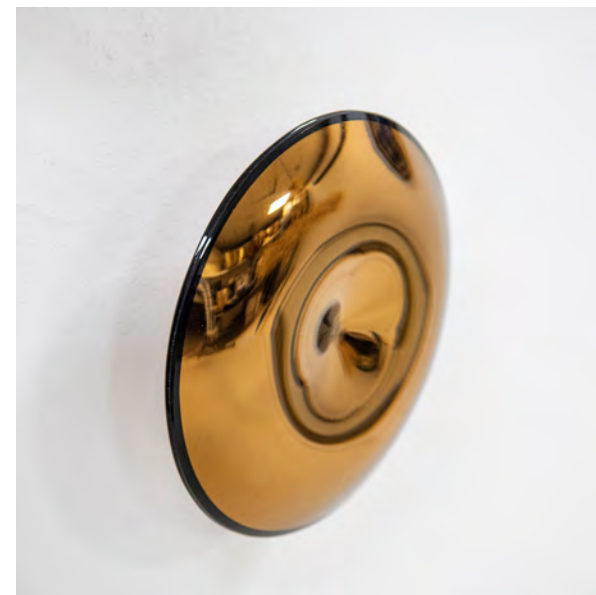
## Foddis & Baisi

PICCOLA ASTRONAVE ROSA, ITALY, 2024

Colored sculpted glass on a  
polished brass structure  
Maison Rapin limited edition  
Diameter 23 x Depth 4 or 5.5 cm  
Diameter 9.5 x Depth 2.16 inches

MAISON RAPIN  
7 QUAI DE CONTI, 75006 PARIS

+33 (0)1 42 61 24 21  
CONTACT@MAISON-RAPIN.COM  
WWW.MAISON-RAPIN.COM



---

# MAISON RAPIN

---



Marc Bankowsky

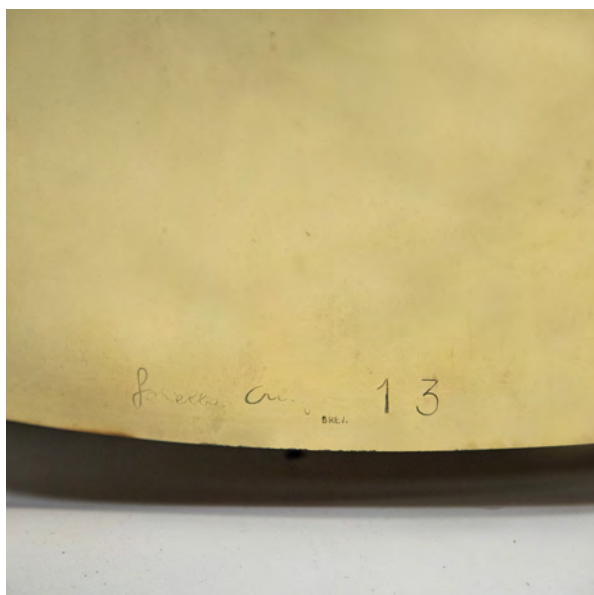
ASTROLABE BENCH, FRANCE, 2024

Black and gilt patinated bronze legs, seating  
area covered with geometrical handmade  
embroideries by Miguel Cisterna  
Exclusive design for Maison Rapin  
H 48 x W 120 x D 45 cm  
H 18.90 x W 47.24 x D 17.72 inches

MAISON RAPIN  
7 QUAI DE CONTI, 75006 PARIS

+33 (0)1 42 61 24 21  
CONTACT@MAISON-RAPIN.COM  
WWW.MAISON-RAPIN.COM

---



## Gabriella Crespi (1889-1976)

YANG YIN BAR, ITALY, 1979

Two-part opening bar in lacquered wood and brass

H 52.5 x W 82 x P 61 cm

H 20.08 x W 31.89 x D 24.02 inches

Opened bar: H 52.5 x W 163 x P 61 cm

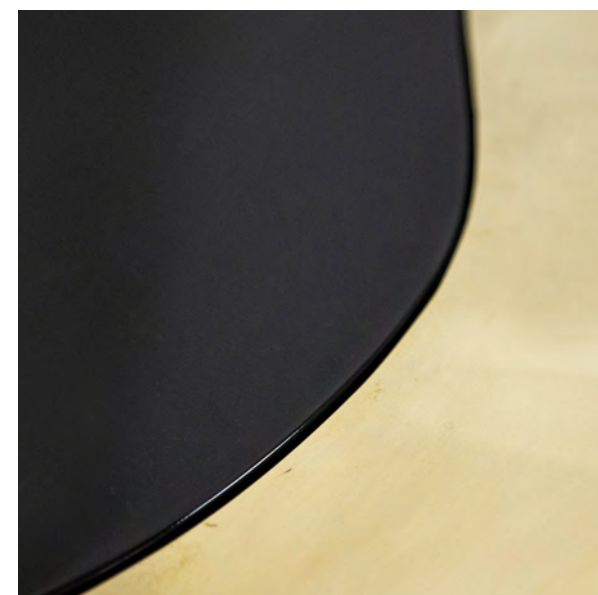
20.08 x 64.17 x 24.02 inches

### Bibliography:

P. Favardin, G. Bloch-Champfort, *Les Décorateurs des années 60-70*, Norma, Paris, 2007, p. 145 (similar model)

MAISON RAPIN  
7 QUAI DE CONTI, 75006 PARIS

+33 (0)1 42 61 24 21  
CONTACT@MAISON-RAPIN.COM  
WWW.MAISON-RAPIN.COM



MAISON  
RAPIN



## Vittorio Dassi (1893-1973)

«DANCERS» CONSOLE, ITALY, CIRCA 1930

Rare wooden console, rectangular top made with  
«pietra dura» marble making a dance scene  
H 81.5 x W 150.5 x D 57 cm  
H 32.09 x W 59.25 x D 22.44 inches



MAISON RAPIN  
7 QUAI DE CONTI, 75006 PARIS

+33 (0)1 42 61 24 21  
CONTACT@MAISON-RAPIN.COM  
WWW.MAISON-RAPIN.COM



Vittorio Dassi (1893-1973)

«CIRCUS» CONSOLE, ITALY, CIRCA 1930

Rare wooden console, rectangular top made with  
«pietra dura» marble making a circus scene  
H 81.5 x W 147 x D 57 cm  
H 32.09 x W 57.87 x D 22.44 inches

MAISON RAPIN  
7 QUAI DE CONTI, 75006 PARIS

+33 (0)1 42 61 24 21  
CONTACT@MAISON-RAPIN.COM  
WWW.MAISON-RAPIN.COM



---

MAISON  
RAPIN

---



Melchiorre Bega (1898-1976)  
pour Luigi Vietti (1903-1998)

COFFEE TABLE, ITALY, 1938

Geometrical wooden coffee table covered with  
parchment

H 50 x W 180 x D 90 cm

H 19.69 x W 70.87 x D 35.43 inches

Provenance : Villa Wanda, Stresa

Ref. : Domus n. 121, January 1938

MAISON RAPIN  
7 QUAI DE CONTI, 75006 PARIS

+33 (0)1 42 61 24 21  
CONTACT@MAISON-RAPIN.COM  
WWW.MAISON-RAPIN.COM

---



MAISON  
RAPIN



## MARTIN & GUENIER

MIRROR, FRANCE, CIRCA 1930-1940

Wrought-iron frame with glass wall lamps

Signed

H 140 X W 90 x D 12 cm

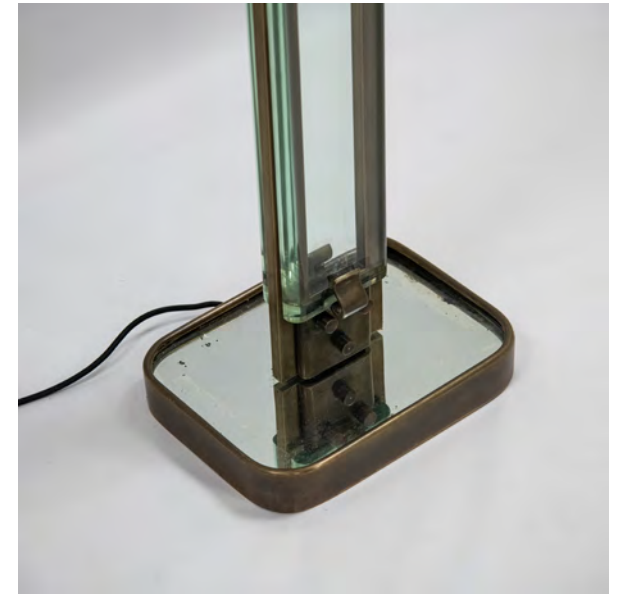
H 55.12 x W 35.43 X D 4.72 inches

MAISON RAPIN  
7 QUAI DE CONTI, 75006 PARIS

+33 (0)1 42 61 24 21  
CONTACT@MAISON-RAPIN.COM  
WWW.MAISON-RAPIN.COM







Pietro Chiesa (1876-1959)

FLOOR LAMP, ITALY, CIRCA 1930

Glass and brass floor lamp with silk lampshade  
Made for Fontana Arte

175.5 x 55 x 55 cm

69.09 x 9.84 x 12.79 inches

Bibliography:

F. Deboni, Fontana Arte, Gio Ponti, Pietro Chiesa, Max Ingrand, ed. Umberto Allemandi & C., 2012, p. 88, fig. 86 (similar model)

MAISON RAPIN  
7 QUAI DE CONTI, 75006 PARIS

+33 (0)1 42 61 24 21  
CONTACT@MAISON-RAPIN.COM  
WWW.MAISON-RAPIN.COM





Franco Asco (1903-1980)

FORMA EVOLUZIONE 14B, ITALY, 1957

Bronze abstract sculpture on a stone pedestal

Unique piece

H 81 x W 42 x D 25 cm

H 31.89 x W 16.54 x D 9.84 inches

Bibliography:

Franco Asco Scultore, Museo di Milano, 1979

MAISON RAPIN  
7 QUAI DE CONTI, 75006 PARIS

+33 (0)1 42 61 24 21  
CONTACT@MAISON-RAPIN.COM  
WWW.MAISON-RAPIN.COM



---

MAISON  
RAPIN

---



Franco Asco (1903-1980)

FORMA EVOLUZIONE 64, ITALY, 1962

Bronze abstract sculpture Signed  
Unique piece

H 92 x W 27 x D 27 cm

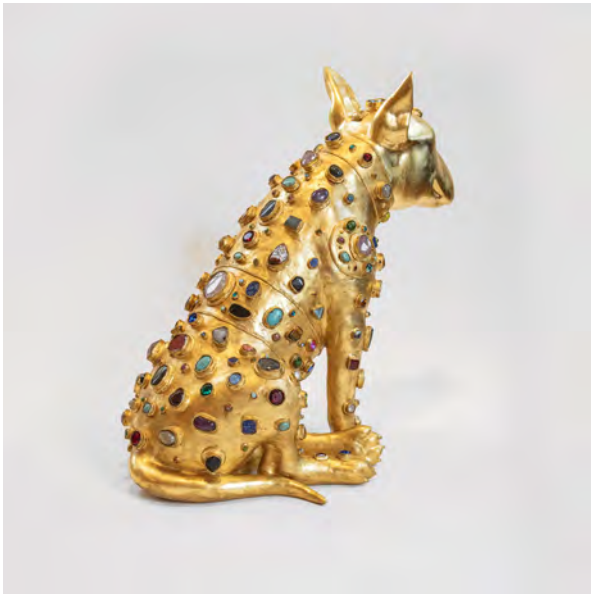
H 36.22 x W 10.63 x D 10.63 inches

MAISON RAPIN  
7 QUAI DE CONTI, 75006 PARIS

+33 (0)1 42 61 24 21  
CONTACT@MAISON-RAPIN.COM  
WWW.MAISON-RAPIN.COM

---





## Ella K

BULL TERRIER SCULPTURE, FRANCE, 2022

Bull terrier sculpture in gold-leafed resin, set with cabochons of semi-precious stones and glass.

Signed «Aurèle» and «Ella K.» and dated

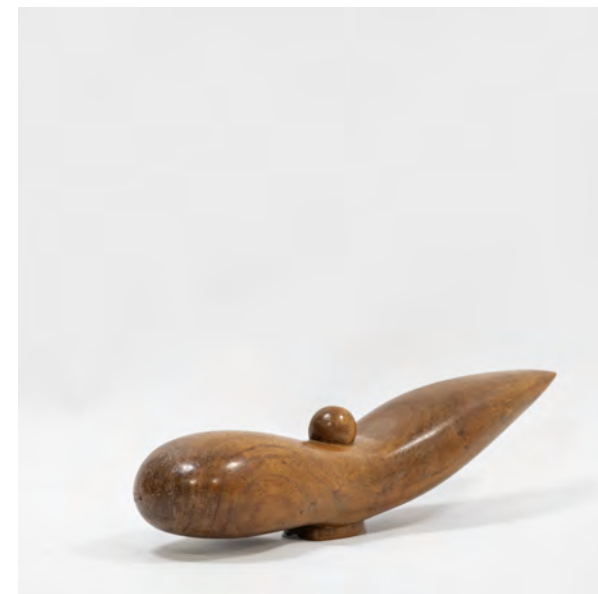
H 50 x W 38 x D 60 cm

H 19.68 x W 14.96 x D 23.62 inches

MAISON RAPIN  
7 QUAI DE CONTI, 75006 PARIS

+33 (0)1 42 61 24 21  
CONTACT@MAISON-RAPIN.COM  
WWW.MAISON-RAPIN.COM





## Jean Gabriel Chauvin (1889-1976)

GRAINE ARDENTE, FRANCE, 1958

Abstract sculpture in wood  
Signed

H 11 x W 45,5 x D 10 cm

H 4.33 x W 17.91 x D 3.94 inches

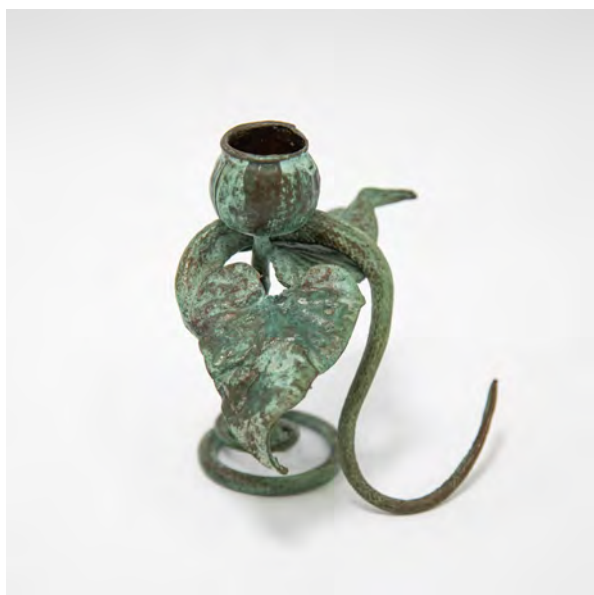
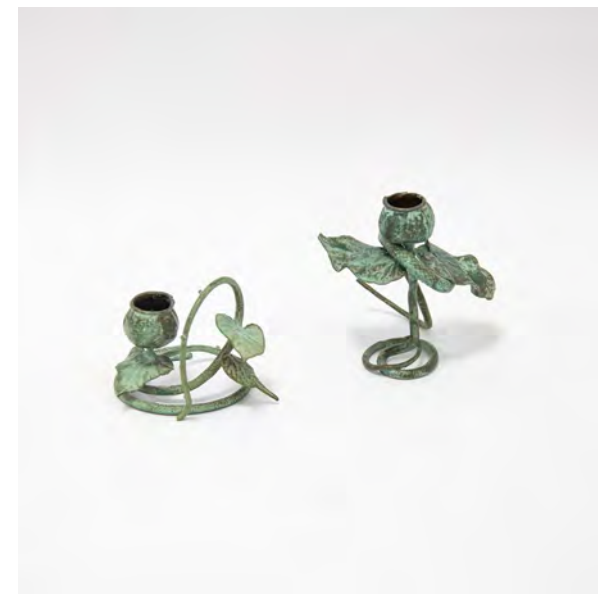
Bibliography:

C. Zervos, Chauvin, Cahiers d'arts, Paris, 1960, p. 100

Exhibited at the 31th Biennale di Venezia,  
June-October 1962

MAISON RAPIN  
7 QUAI DE CONTI, 75006 PARIS

+33 (0)1 42 61 24 21  
CONTACT@MAISON-RAPIN.COM  
WWW.MAISON-RAPIN.COM



Claude Lalanne (1925-2019)

PAIR OF CANDLE HOLDERS, FRANCE, 1989

Pair of bronze with green patina candle holders

Artcurial certificate dated November 9, 1989

Number 94 of 450

H 9 x W 12 x D 8 cm /

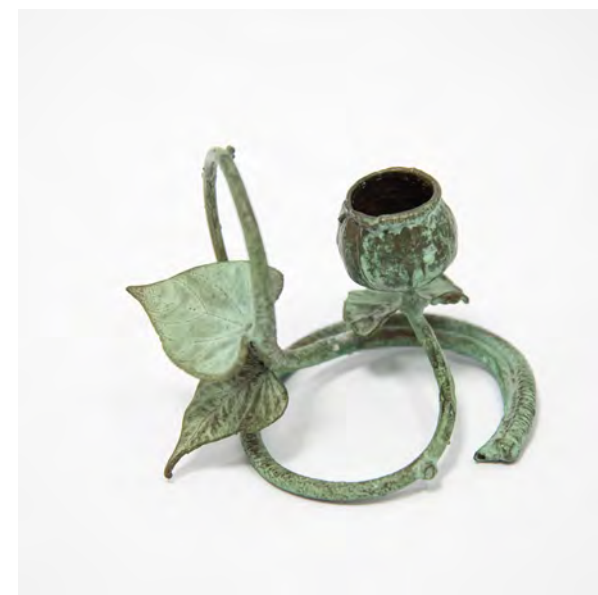
H 3.54 x W 4.72 x D 3.15 inches

H 12 x L 10 x P 12 cm /

H 4.72 x W 3.94 x D 4.72 inches

MAISON RAPIN  
7 QUAI DE CONTI, 75006 PARIS

+33 (0)1 42 61 24 21  
CONTACT@MAISON-RAPIN.COM  
WWW.MAISON-RAPIN.COM





## Jean Després (1889-1980)

FLATWARE SERVICE, FRANCE, CIRCA 1950

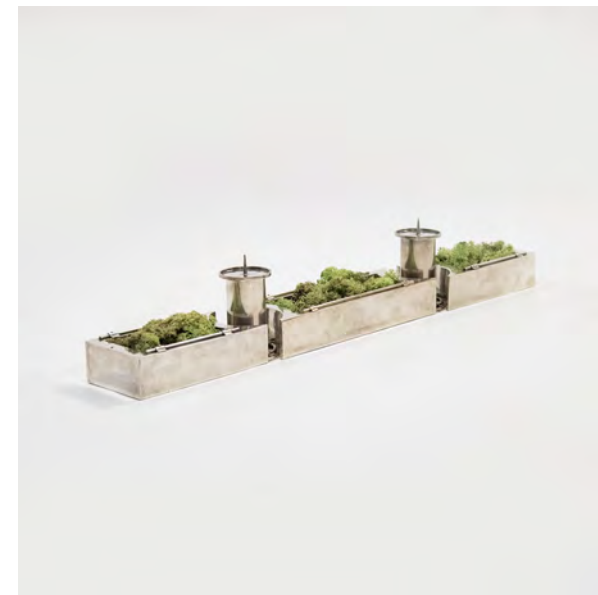
Flatware service in solid silver composed of 108 pieces: 12 forks, 12 spoons, 12 fish knives, 12 dessert forks, 12 dessert spoons, 12 oyster forks, 12 coffee spoons, 12 silver fish forks and 12 knives

Master's mark

MAISON RAPIN  
7 QUAI DE CONTI, 75006 PARIS

+33 (0)1 42 61 24 21  
CONTACT@MAISON-RAPIN.COM  
WWW.MAISON-RAPIN.COM





## Jean Després (1889-1980)

CENTERPIECE, FRANCE, CIRCA 1960

Silver-plated metal centerpiece  
Signed under the base  
Master's mark  
H 5.5 and 11 x W 74.4 cm  
H 2.16 and 4.33 x W 29.9 inches



MAISON RAPIN  
7 QUAI DE CONTI, 75006 PARIS

+33 (0)1 42 61 24 21  
CONTACT@MAISON-RAPIN.COM  
WWW.MAISON-RAPIN.COM





## Jean Després (1889-1980)

PAIR OF CANDLE HOLDERS, FRANCE, CIRCA 1950

Pair of hammered silver-plated candle holders

Signed

Master's mark

H 21 x W 12 x D 12 cm

H 8.27 x W 4.72 x D 4.72 inches

Bibliography: M. Gabardi, Jean Després,  
Bijoutier et orfèvre entre Art déco et modernité,  
Musée des Arts Décoratifs, 2009, p. 171  
(identical model)

MAISON RAPIN  
7 QUAI DE CONTI, 75006 PARIS

+33 (0)1 42 61 24 21  
CONTACT@MAISON-RAPIN.COM  
WWW.MAISON-RAPIN.COM

---

MAISON  
RAPIN

---



Jean Després (1889-1980)

LETTER OPENER, FRANCE, CIRCA 1930

Silvered metal letter opener, cylindrical handle

L 30 x W 3 cm

L 11.81 x W 1.18 inches

MAISON RAPIN  
7 QUAI DE CONTI, 75006 PARIS

+33 (0)1 42 61 24 21  
CONTACT@MAISON-RAPIN.COM  
WWW.MAISON-RAPIN.COM

---



Jean Després (1889-1980)

BRACELET, FRANCE, 1930

Art Deco silver bracelet

Signed

Master's mark

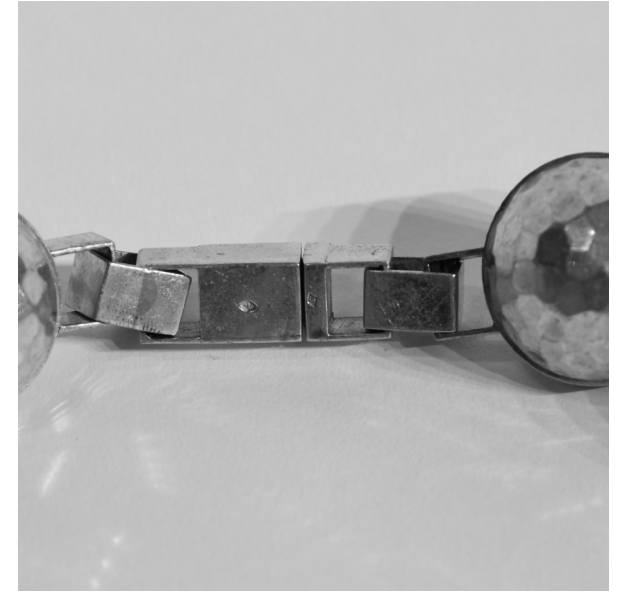
W: 19 cm

W: 7.49 inches

Bibliography: M. Gabardi, Jean Després,  
Bijoutier et orfèvre entre Art Déco et  
modernité, Paris, 2009. pp. 9; 199

MAISON RAPIN  
7 QUAI DE CONTI, 75006 PARIS

+33 (0)1 42 61 24 21  
CONTACT@MAISON-RAPIN.COM  
WWW.MAISON-RAPIN.COM



Jean Després (1889-1980)

NECKLACE, FRANCE, CIRCA 1930

Silver Necklace with hammered silver  
geometrical patterns.

Master's mark

Length : 55 cm / 21.64 inches

Spheres diameter : 3 cm / 1.18 inches

MAISON RAPIN  
7 QUAI DE CONTI, 75006 PARIS

+33 (0)1 42 61 24 21  
CONTACT@MAISON-RAPIN.COM  
WWW.MAISON-RAPIN.COM

---

MAISON  
RAPIN



## Jean Després (1889-1980)

RING, FRANCE, CIRCA 1950

Silver ring and head ring with rectangular gold details

Master's mark

Diameter : 1.8 cm / 0.71 inch

Size US 8 / Size FR 57

MAISON RAPIN  
7 QUAI DE CONTI, 75006 PARIS

+33 (0)1 42 61 24 21  
CONTACT@MAISON-RAPIN.COM  
WWW.MAISON-RAPIN.COM



MAISON  
RAPIN



## Jean Després (1889-1980)

RING, FRANCE, CIRCA 1950

Silver ring with cylindrical gold-plated  
decoration

Master's mark

Total diameter: 2.8 cm / 0.79 inch

Size FR : 54/55

Size US : 7/7.5

MAISON RAPIN  
7 QUAI DE CONTI, 75006 PARIS

+33 (0)1 42 61 24 21  
CONTACT@MAISON-RAPIN.COM  
WWW.MAISON-RAPIN.COM



MAISON  
RAPIN



## Jean Després (1889-1980)

RING, FRANCE, CIRCA 1940

Silver ring head with a rectangular central  
shagreen inclusion

Master's mark

Diameter : 1.9 cm / 0.75 inch

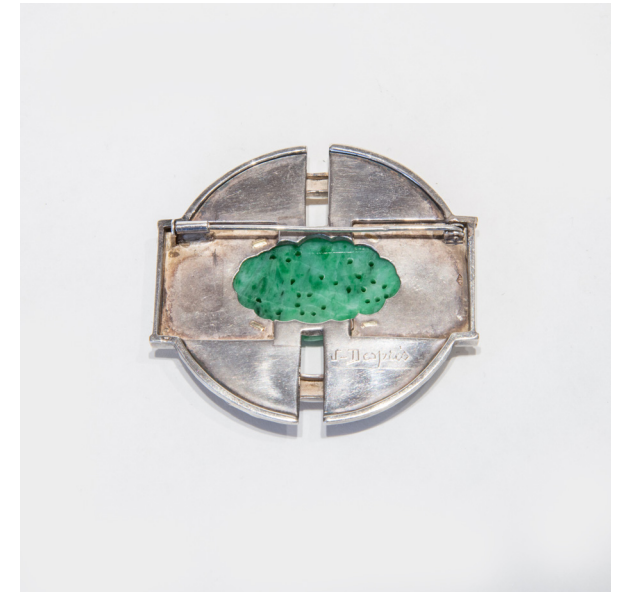
Size US 9.5 / Size FR 60

Ring head : H 2.6 x W 3 cm / H 1.02 x W 1.18 inches

MAISON RAPIN  
7 QUAI DE CONTI, 75006 PARIS

+33 (0)1 42 61 24 21  
CONTACT@MAISON-RAPIN.COM  
WWW.MAISON-RAPIN.COM





## Jean Després (1889-1980)

PIN, FRANCE, CIRCA 1930

Pin in silver and yellow gold with geometric  
decoration, set with a carved jade motif.

Signed.

Master's mark

H 6 x L 6.5 cm

H 2.56 x W 2.36 inches

MAISON RAPIN  
7 QUAI DE CONTI, 75006 PARIS

+33 (0)1 42 61 24 21  
CONTACT@MAISON-RAPIN.COM  
WWW.MAISON-RAPIN.COM







## Julia Keilowa (1902-1943)

CIGAR BOX, POLAND, CIRCA 1930

Silver cigar box, sleeve and base in silver and  
ebony wood. Attributed to Julia Keilowa  
H 6,5 x W 15,5 x D 7,5 cm  
H 2.56 x W 6.10 x D 2.95 inches

MAISON RAPIN  
7 QUAI DE CONTI, 75006 PARIS

+33 (0)1 42 61 24 21  
CONTACT@MAISON-RAPIN.COM  
WWW.MAISON-RAPIN.COM

